

CompuDAS

CPC-16EX

Critical Process Control and Data Acquisition System



The **COMPUDAS® CPC-16EX** is a complete, flexible, standalone Control and Data Acquisition System designed to monitor, document and control processes for Ovens, Autoclaves, Furnaces, and Presses.

A companion PC is used for operator display and configuration set up. Once the parameters are defined, the PC has no active control of the processes. Process measurements are stored on the control system's solid state hard drive and transmitted to the operator PC. The Operator PC is Windows compatible and allows for recipe creation, recipe recall, process monitoring, data file archiving, report generation and operator high-level control. Secure PC connection to a corporate or facility network allows for monitoring of processes remotely. This feature also allows CompuDAS® to provide remote support as required. A secure Excel compatible data file is generated for each load processed and can be accessed for reporting and certification purposes. Manual loop controller(s) may also be incorporated, which allows for either manual or automatic operation of the process.

The basic CPC-16EX system includes:

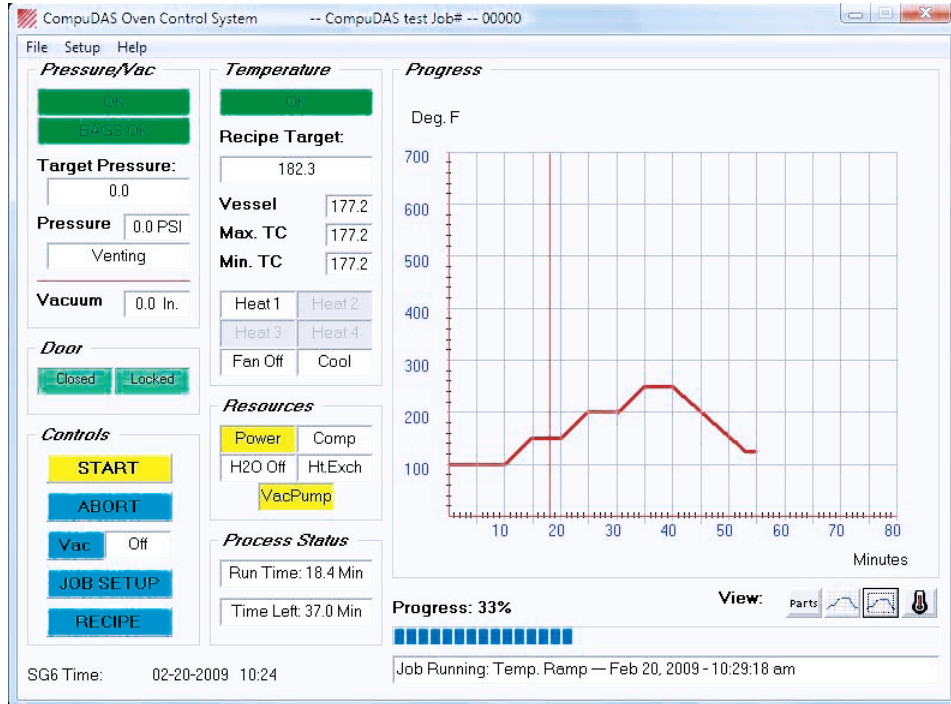
Control and data acquisition software and hardware including a graphics reporting utility. Single Board Computer with real time clock for on board storage of program files, calibration files and message logs. 16 individual channels (expandable in groups of 16). Up to 128 part thermocouples, 64 vacuum channels, plus additional channels for system monitoring as required.

Software features include:

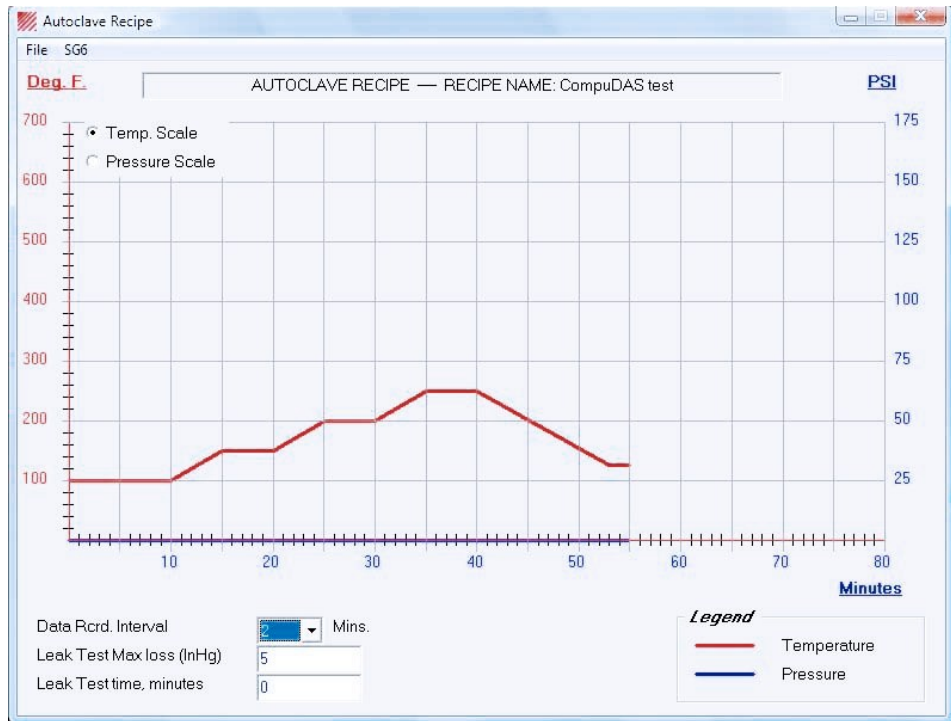
- Real-time graphing to the operator screen providing a view of the most recent readings.
- Excel compatible and tamper evident files are created so that specific graphic/reporting needs are easily accommodated.
- Printed and/or electronic data availability. Printed data of relevant graph screens of many reporting options are available via the set-up screen.
- Remote monitoring of processes by facility network and/or Internet.

Other features include:

- 20 Ramp/Soak Segments.
- User controlled Superheating to reduce ramp times.
- Soak timing controlled by leading or lagging part temperatures.
- AMS-2750 and BAC-5621 compliant
- Calibration in place on a per channel basis.
- Manual override of recipe values during a process.
- Redundant control capability.
- Remote monitoring of system data even from out of plant locations.
- Process monitoring even when the Operator PC is 'off-line'.
- Real time graphic and tabular display of process variables
- Automatic and /or manual elimination of suspect part thermocouples
- Cure cycle creation menus
- Wall mounted NEMA enclosure



Operator Screen with progress/recipe graphic



Typical cure cycle

For over 40 years, **CompuDAS** has provided reliable and effective solutions for Industrial Control and Monitoring Data Acquisition and Test Automation.

CompuDAS

1350 E Shelton Springs Road, Shelton, WA 98584

Phone: (360) 427-1418 Fax: (360) 427-1419

E-mail: sales@compudas.com Web: www.compudas.com