

CompuDAS

CPM-16

Multi-Channel Critical Process Monitor, for plant wide process and environmental monitoring



The CompuDAS® Model CPM –16 is a low cost self-contained unit for process monitoring. It is equipped with eight independent analog inputs. The inputs may be a combination of thermocouples, RTD's, pressure transducers or almost any voltage or current (4-20ma) based sensors.

The CPM-16 system is a desk top unit that includes a Digital Display, Switches, (1)Single Board Computer with a built-in solid state Hard Drive. The CPM-16 provides high-speed, low cost communication utilizing our friendly Windows Based Software, and Ethernet connectivity which allows multiple PC's to view and access data simultaneously.

Features:

- Front Panel Process Display
- Per Channel Engineering Unit Scaling and Calibration
- Remote Connectivity
- Windows based Interface and Ethernet compatible
- Paperless Recording - Excel Compatible Data Files
- Solid State Hard Drive
- Auto Start/Stop Logging
- Alarm Input/output for each channel
- Direct Thermocouple Connectivity
- Display is selectable by channel and/or by card
- AMS-2750 and BAC-5621 compliant

Data Storage Capabilities

- Real-time Clock-Date/time stamping of data records
- Standard 3 million on-board readings
- Easily Expandable in groups of 3 million readings
- Recording intervals from 10 seconds to one hour
- Excel compatible "tamper evident" files saved to on-board hard drive then loaded to PC or network
- One download file may be created for each group of 8 channels
- Each file is date and time stamped for each data logging session.

Programmable Input Ranges and A/D Converter Resolution

- 16 bit resolution stable to 0.02 %/year
- +/- 10 volts
- +/- 1 volt
- +/- 100 millivolts
- +/- 10 millivolts
- Input common mode range from -10V to +10V

Internal Excitation Supply

- +5 volts nominal (+/- 5%) to 200 Ma
- Temperature stability 2 mV per degree C typi-

Graphical User Interface Features

- Process monitoring setup
- Real-time viewing of current process inputs including minimums and maximums
- Real-time graphing of 6 process inputs (printable).
- Start/Stop and limit reset control
- Data transfer to operator PC's or user network
- Display selectable by channel and/or card
- Adjustable engineering units such as mV, DegF, DegC, PSI etc.

Operator PC Requirements

- Windows 7 and backwards compatible
- Printer for real-time graph and record printing

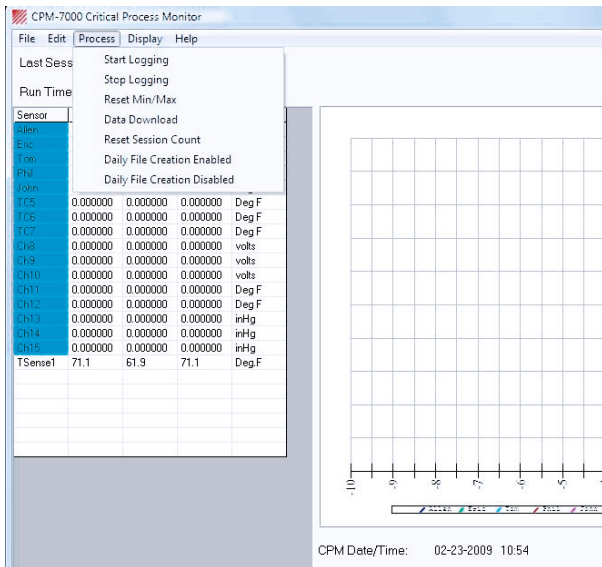
Physical Characteristics

- Desk top unit is 13.5" wide, 11" deep and 3.5" high
- NEMA unit 24" x 20" x 8", wall mount
- 4-digit LED display
- Switch selection of channel and/or card
- Logger start/stop switch

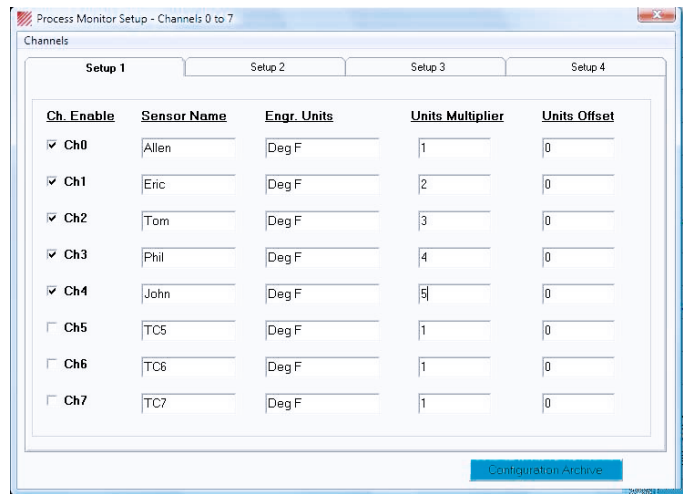
Support and training

Extended factory support and training is available via telephone and/or the internet.

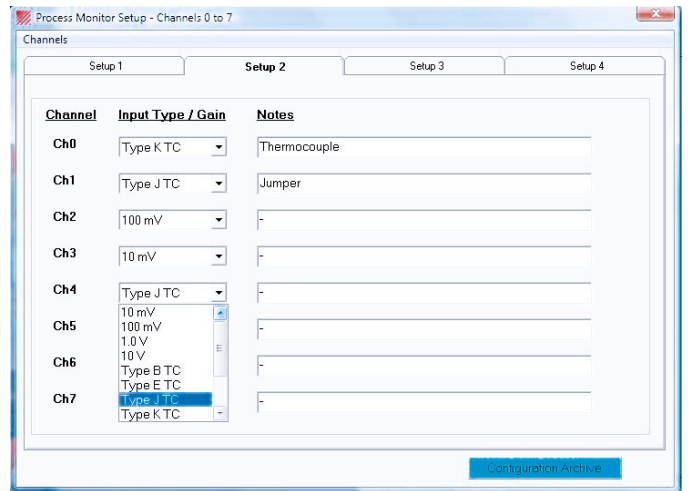
Our trained engineers and representatives are available to help with individual installations and applications with immediate response to reduce critical down-time.



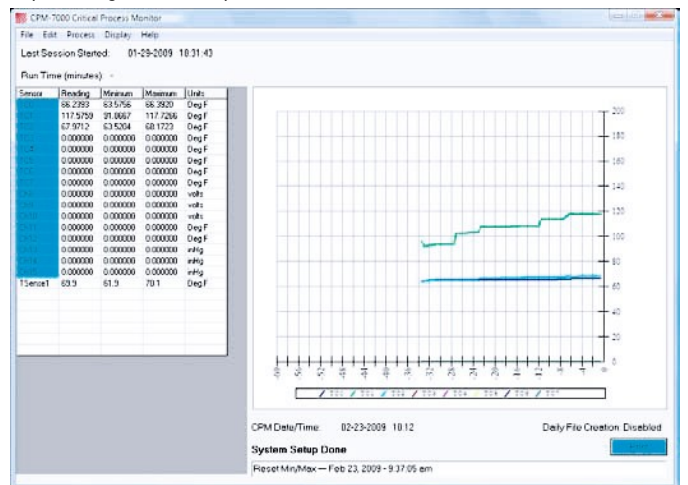
Process Monitor Set-up with Operator Selectable Functions



Process Monitor Set-up Menu.



Input Configuration Set-up Menu.



Manual Operator Screen with Graph.

For over 40 years, **CompuDAS** has provided reliable and effective solutions for Industrial Control and Monitoring Data Acquisition and Test Automation.

CompuDAS

1350 Shelton Springs Road, Shelton, WA 98584

Phone: (360) 427-1418 Fax: (360) 427-1419

E-mail: sales@compudas.com Web: www.compudas.com