

CompuDAS

CPM-16 EX

Multi-Channel Critical Process Monitor, for plant wide process and environmental monitoring



The CompuDAS® Model CPM-16EX is a low cost unit for process monitoring that can be configured to accept from 16 to 256 independent analog inputs. Inputs may be a combination of thermocouples, RTD's, pressure transducers or almost any voltage or current based sensors. Expansion boards may be remote from the base unit for SCADA applications.

The basic CPM-16EX system can be a wall mounted unit and includes one 16 channel Analog Input Card, Front Panel Display, Switches, and one Single Board Computer with built-in solid state Hard Drive that can store over three million readings even if the operator PC is "off-line". Additional storage is available. All stored files are Excel compatible. The CPM-7000 provides high-speed, low cost communication utilizing our friendly Windows Based Software, and Ethernet connectivity which allows multiple PC's to view and access data simultaneously.

Features:

- Multi-Channel - 16 Channels per card, up to 16 cards (256 Channels)
- Per Channel Engineering Unit Scaling and Calibration
- Remote Connectivity
- Windows based Interface and Ethernet compatible
- Paperless Recording - Secure Excel Compatible Files that are "tamper evident"
- Solid State Hard Drive
- Auto Start/Stop Logging
- AMS-2750 and BAC-5621 compliant

- Alarm Input/output for each channel
- Direct Thermocouple Connectivity
- Display is selectable by channel and/or by card

Data Storage Capabilities

- Real-time Clock-Date/time stamping of data records.
- Standard 3 million on-board readings
- Easily Expandable in groups of 3 million readings
- Recording intervals from 10 seconds to one hour
- 16 channels per card - expandable to 16 cards (256 channels)
- Excel compatible files saved to on-board hard drive.
- One download file may be created for each group of 8 channels
- Each file is date and time stamped for each data logging session

Programmable Input Ranges and A/D Converter Resolution

- 16 bit resolution stable to 0.02 %/year
 - +/- 10 volts
 - +/- 1 volt
 - +/- 100 millivolts
 - +/- 10 millivolts
 - Input common mode range from -10V to +10V
- ### Internal Excitation Supply
- +5 volts nominal (+/- 5%) to 200 Ma
 - Temperature stability 2 mV per degree C typical

Graphical User Interface Features

- Process monitoring setup
- Real-time viewing of current process inputs including minimums and maximums
- Real-time graphing of 6 process inputs (printable)
- Start/Stop and limit reset control
- Data transfer to operator PC's or user network.
- Display selectable by channel and/or card

Operator PC Requirements

- Windows 7 and backwards compatible

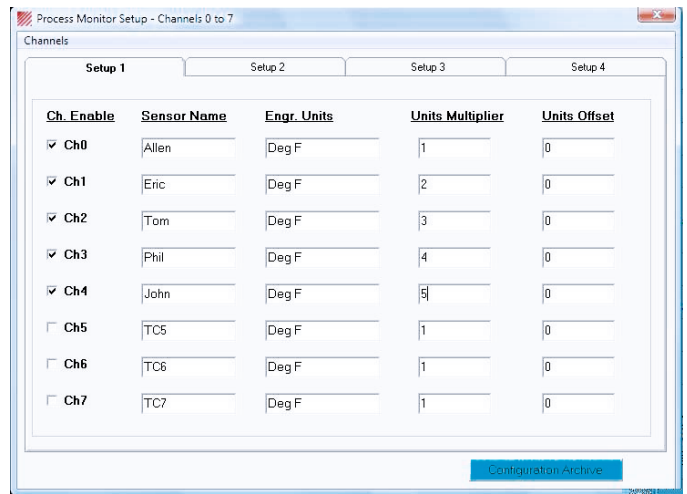
Physical Characteristics

- NEMA Enclosure intended for wall mount
- 4-digit LED display
- Switch selection of channel and/or card
- Logger start/stop switch

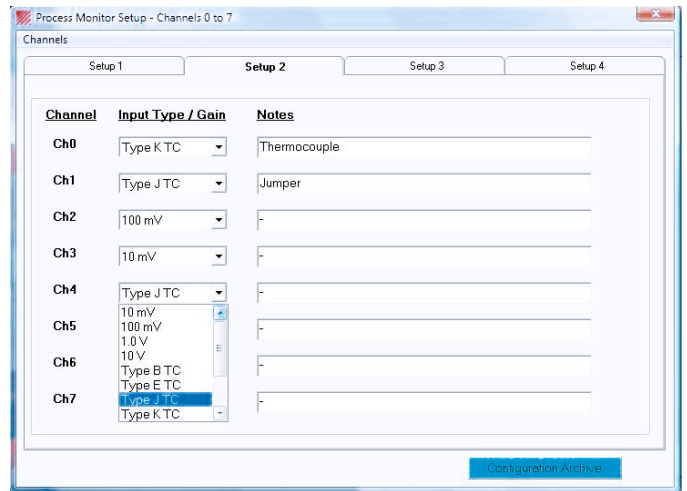
Support and training

Extended factory support and training is available via telephone and/or the internet.

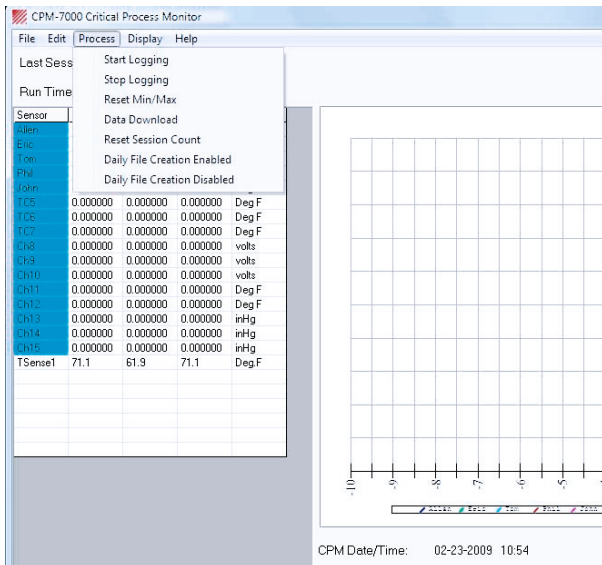
Our trained engineers and representatives are available to help with individual installations and applications with immediate response to reduce critical down-time.



Process Monitor Set-up Menu.



Input Configuration Set-up Menu.



Process Monitor Set-up with Operator Selectable Functions



Manual Operator Screen with Graph.

For over 40 years, CompuDAS has provided reliable and effective solutions for Industrial Control and Monitoring Data Acquisition and Test Automation.

CompuDAS

1350 Shelton Springs Road, Shelton, WA 98584

Phone: (360) 427-1418 Fax: (360) 427-1419

E-mail: sales@compudas.com Web: www.compudas.com