

# CompuDAS

## CPM-8

### *Multi-Channel Critical Process Monitor, for plant wide process and environmental monitoring*

The CompuDAS® Model CPM-8 is a low cost, unit for process monitoring that is equipped with eight independent analog inputs. Inputs may be a combination of thermocouples, RTD's, pressure transducers or almost any voltage or current (4-20ma) based sensors.

The CPM-8 system is a wall mounted unit that includes a Digital Display, a Menu driven Keypad and one Single Board Computer with a built-in solid state Hard Drive. The CPM-8 provides high-speed, low cost communication utilizing our friendly Windows Based Software, and Ethernet connectivity which allows multiple PC's to view and access data simultaneously.

#### Features:

- Digital Process Display
- Per Channel Engineering Unit Scaling and Calibration.
- Remote Connectivity
- Windows based Interface that connects via Ethernet
- Paperless Recording - Excel Compatible Files that are "tamper evident"
- Solid State Hard Drive
- User selectable Auto Start/Stop Logging with adjustable parameters
- Two Solid State AC Relay alarm outputs
- Alarm Input/output programmable for each channel
- Direct Thermocouple Connectivity
- Display is selectable by channel
- AMS-2750 and BAC-5621 compliant



#### Data Storage Capabilities

- Standard 3 million on-board readings
- Easily Expandable memory in groups of 3 million readings
- Recording intervals scalable from 10 seconds to one hour
- Excel compatible files are saved to on-board hard drive
- Each file is dated and time stamped for each data logging session

#### Programmable Input Ranges and A/D Converter Resolution

- 16 bit resolution stable to 0.02 %/year
- +/- 10 volts
- +/- 1 volt
- +/- 100 millivolts
- +/- 10 millivolts
- Input common mode range from -10V to +10V

#### Internal Excitation Supply

- +5 and +12volts nominal (+/- 5%) to 200 ma
- Temperature stability 2 mV per degree C typical

## Graphical User Interface Features

- Process monitoring setup
- Real-time viewing of current process inputs including minimums and maximums
- Real-time graphing of 6 process inputs (printable)
- Start/Stop and limit reset control
- Data transfer to operator PC's or user network
- Display selectable by channel and / or card

## Operator PC Requirements

- Windows 7 and backwards compatible
- Selectable engineering units

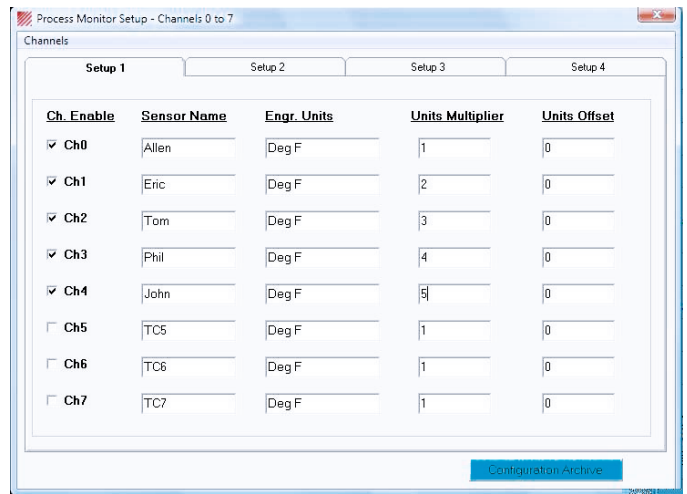
## Physical Characteristics

- Wall mount unit is 12" wide, 16" tall and 6" deep.
- 20 digit Liquid Crystal display with keypad driven menu

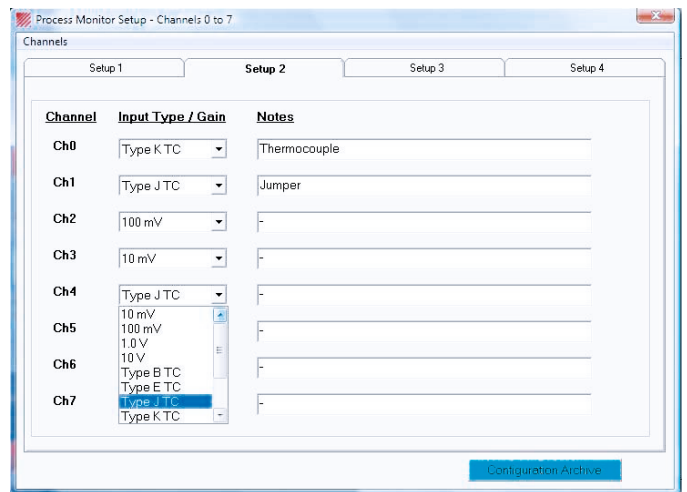
## Support and training

Extended factory support and training is available via telephone and/or the internet.

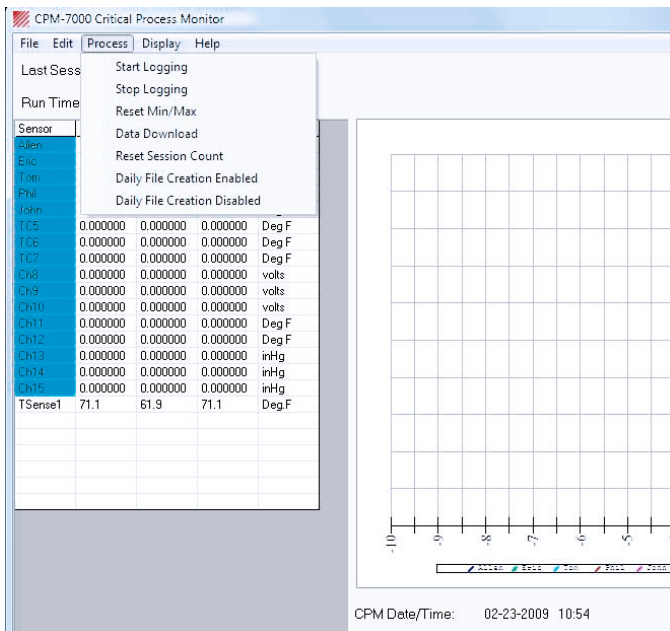
Our trained engineers and representatives are available to help with individual installations and applications to reduce critical down-time.



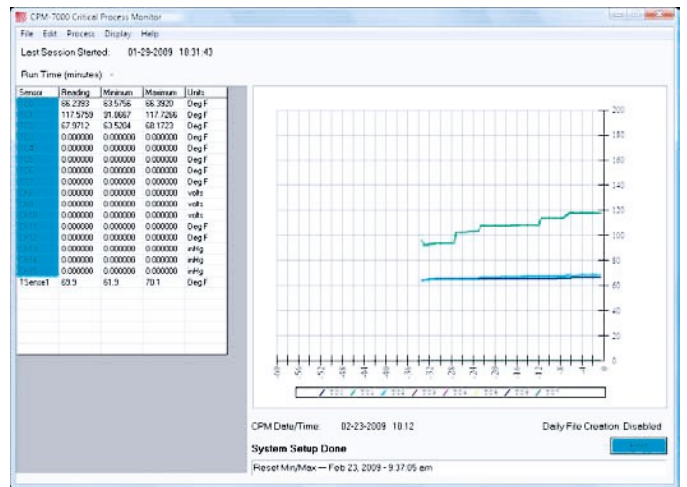
Process Monitor Set-up Menu.



Input Configuration Set-up Menu.



Process Monitor Set-up with Operator Selectable Functions



Manual Operator Screen with Graph.

For over 40 years, **CompuDAS** has provided reliable and effective solutions for Industrial Control and Monitoring Data Acquisition and Test Automation.

## CompuDAS

1350 E Shelton Springs Road, Shelton, WA 98584

Phone: (360) 427-1418 Fax: (360) 427-1419

E-mail: sales@compudas.com Web: www.compudas.com